

Campagnolo®

SYNCRO®



USA

SYNCRO

The possibility of centering the chain on a specific freewheel sprocket through the use of the shift lever has historically been a characteristic of non-competitive bicycles.

In light of the increased attention to this category of the bicycle market by Campagnolo, we have created SYNCRO shift levers to address the needs of these cyclists, as well.

Specifically, this new product allows the cyclist to center the chain on the sprocket easily and smoothly by means of a new shifting selector mechanism; and also incorporates the conventional friction feature.

The SYNCRO is a sophisticated dual function shift lever that offers the user both conventional friction and selector (INDEX) shifting capabilities.

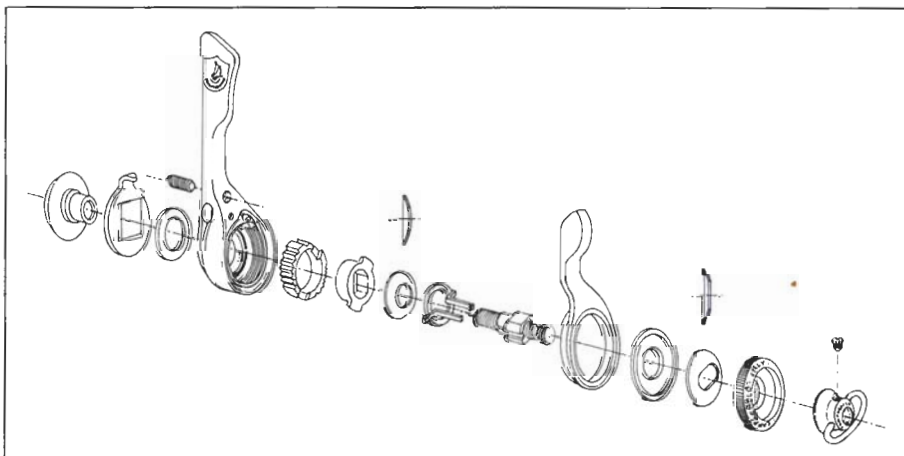
The SYNCRO shift lever is actually composed of two levers: the main one functioning as the gear selector, while the second smaller one, coaxial with the first, changes the system from selector (INDEX) mode to friction mode.

In selector mode the SYNCRO is adjusted by regulating the cable tension with the barrel adjuster on the derailleur. For derailleurs not equipped with a cable adjuster one is included in the SYNCRO kit.

In order to change to friction mode depress the second lever until the stop click is heard (approx. 45°).

The second lever is held parallel to the first by the knurled aluminium ring nut located between the wing nut and the second lever. The release of the second lever may be adjusted by a small set screw located on the body of the main lever.

The SYNCRO offers the unique feature of a fully adjustable friction mode. The wing nut allows the rider to select the amount of friction to his or her personal needs.



Choose yo



our Syncro

SYNCRO 2

SYNCRO 2 is a new selector (INDEX) shift lever from Campagnolo. It is compatible with different types of freewheels and derailleurs and also offers the user the choice of friction or selector (INDEX) shifting.

With SYNCRO 2 the second lever of the original SYNCRO has been eliminated. The resulting simplification of internal components makes assembly simpler and faster.

The shifting precision of SYNCRO 2 has been enhanced with the use of a double detent system to insure a positive engagement of the micrometric insert.

The inserts are fully interchangeable with those of the original SYNCRO and are available for various combinations of derailleurs and freewheels (see table below).

With SYNCRO 2 changing from selector mode to friction mode couldn't be simpler, just pull out the knurled washer next to the wing nut and rotate it 90° clockwise.

That's it. And just like the original SYNCRO, the friction is fully adjustable for the rider's personal needs.

To insure durability, Campagnolo has manufactured the toothed insert from a special steel specifically selected to ensure the inalterability of the materials shape, even after prolonged use.

The profile of the teeth within the insert has been computer designed in order to obtain the optimum performance relationship between cable tension, cable housing, derailleur parallelogram and cage plate return springs.

The reliability of the mechanism has been tested and verified through Campagnolo's rigorous testing facilities, subjecting the SYNCRO shift lever mechanism to hundreds of thousands of shifts.

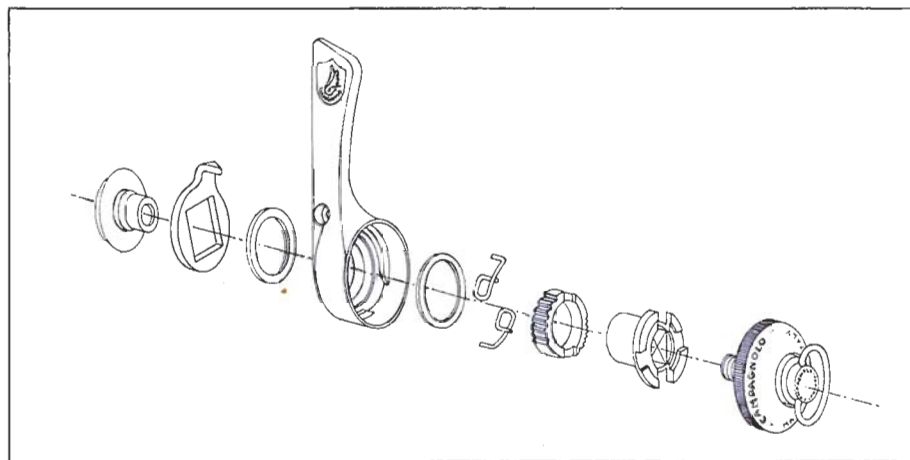


TABLE FOR THE BEST* CONNECTION OF "SYNCRO" LEVERS
WITH FREEWHEELS, CHAINS AND GEARS

GEARS	RECORD	SUPER RECORD	CHORUS	CHORUS	VICTORY TRIOMPHE
6 SPEED FREE WHEELS	6V	6V	A 6	B 6	6V
CAMPAGNOLO	● ▲ ■	● ▲ ■	● ▲ ■ *	● ▲ ■ *	● ▲ ■
MAILLARD 700 COURSE	● ▲ ■	● ▲ ■	● ▲ ■ *	● ▲ ■ *	● ▲ ■
REGINA AMERICA	● ▲	● ▲ ■	● ■ *	● ■ *	● ▲ ■
REGINA ORO	● ▲	● ▲ ■	● ▲ ■ *	● ▲ ■ *	● ▲ ■
SUNTOUR WINNER	● ▲ ■	● ▲ ■	● ▲ ■ *	● ▲ ■ *	● ▲ ■
SHIMANO 105	● ▲ ■	● ▲ ■	● ▲ ■ *	● ▲ ■ *	● ▲ ■
SHIMANO DURA ACE	● ▲ ■	● ▲ ■	● ▲ ■ *	● ▲ ■ *	● ▲ ■
CAIMI	● ▲ ■	● ▲	● ▲ ■ *	● ▲ ■ *	● ■

GEARS	RECORD	SUPER RECORD	CHORUS	CHORUS	VICTORY TRIOMPHE
7 SPEED FREE WHEELS	7V	7V	A 7	B 7	7V
CAMPAGNOLO SERVIZIO CORSA COMPACT	● ▲ ■	● ▲ ■	● ▲ ■ *	● ▲ ■ *	● ▲ ■
MAILLARD 700 COMPACT	● ■	● ■	● ▲ ■ *	● ▲ ■ *	● ▲ ■
REGINA CX S COMPACT	● ■	● ■	● ▲ ■ *	● ▲ ■ *	● ■
SUNTOUR W.P. UC 7000	● ■	● ■	● ■ *	● ■ *	● ■
SHIMANO DURA ACE	● ■	● ■	● *	● *	● ■
CAIMI COMPACT	● ▲ ■	● ▲	● ▲ ■	● ▲ ■	● ▲

Symbols meaning:

● Regina CX S chain - ■ Sedis Sport chain - ▲ Suntour UC 6000 chain - * Shimano Uniglide 600 chain

TABLE FOR THE BEST CONNECTION OF "SYNCRO 2" LEVERS
WITH FREEWHEELS, CHAINS AND GEARS

GEARS	RECORD	SUPER RECORD	VICTORY TRIOMPHE	CHORUS	CHORUS	CROCE D'AUNE SM	CROCE D'AUNE LG
6 SPEED FREE WHEELS	6V	6V	6V	A 6	B 6	6V	6V
CAMPAGNOLO	● * ■	● * ■	● * ■	● * ■	● * ■	● * ■	● * ■
MAILLARD 700 COURSE	● * ▲ ■	● * ▲ ■	● * ▲ ■	● * ▲ ■	● * ▲ ■	● * ▲ ■	● * ▲ ■
REGINA AMERICA	● * ▲	● * ▲ ■	● * ▲ ■	● * ■	● * ■	● * ▲ ■	● * ▲ ■
REGINA ORO	● * ▲	● * ▲ ■	● * ▲ ■	● * ▲ ■	● * ▲ ■	● * ▲ ■	● * ▲ ■
SUNTOUR WINNER	● * ▲ ■	● * ▲ ■	● * ▲ ■	● * ▲ ■	● * ▲ ■	● * ▲ ■	● * ▲ ■
SHIMANO 105	● * ▲	● * ▲	● * ▲	● * ▲ ■	● * ▲ ■	● * ▲	● * ▲
SHIMANO DURA ACE	● * ▲	● * ▲	● * ▲	● * ▲ ■	● * ▲ ■	● * ▲	● * ▲
CAIMI	● * ▲ ■	● * ▲ ■	● * ■	● * ▲ ■	● * ▲ ■	● * ▲ ■	● * ▲ ■

GEARS	RECORD	SUPER RECORD	VICTORY TRIOMPHE	CHORUS	CHORUS	CROCE D'AUNE SM	CROCE D'AUNE LG
7 SPEED FREE WHEELS	7V	7V	7V	A 7	B 7	7V	7V
CAMPAGNOLO SERVIZIO CORSA COMPACT	● ■	● ■	● ■	● * ■	● * ■	● * ■	● * ■
MAILLARD 700 COMPACT	● ■	● ■	● ▲ ■	● * ▲ ■	● * ▲ ■	● * ▲ ■	● * ▲ ■
REGINA CX S COMPACT	● ■	● ■	● ■	● * ▲ ■	● * ▲ ■	● * ▲ ■	● * ▲ ■
SUNTOUR W.P. UC 7000	● ▲	● ■	● ■	● * ■	● * ■	● * ▲	* ▲
SHIMANO DURA ACE	● *	● *	● *	● *	● *	● * ▲	● * ▲
CAIMI COMPACT	● ▲ ■	● ▲	● ▲ ■	● * ■	● * ■	* ▲ ■	▲ ■

Symbols meaning:

● Regina CX S chain - ■ Sedis Sport chain - ▲ Suntour UC 6000 chain - * Shimano Uniglide 600 chain

□ CAMPAGNOLO S.P.A. - VIA DELLA CHIMICA, 4 - 36100 VICENZA - ITALIA - Tel. 0444/564933 - Telex 480074 CAMPA I - Telefax 0444/565062
□ CAMPAGNOLO SARL - RUE DU CHATEAU D'EAU - ROUZIERES DE TOURAINE - 37360 NEUILLE PONT PIERRE - Tel. 47-566569 - Telex 750373 WEIFRA - Telefax 47-566779
□ CAMPAGNOLO CORPORATION - 43 FAIRFIELD PLACE-WEST CALDWELL, N.J. 07006 - Tel. 201-8828733 - Telex 705994 CAMPA CORP - Telefax 201-8828939
! ASSISTENZA TECNICA CLIENTI • CENTRALE (ITALY) - Tel. 0444/571871
• U.S.A. Tel. 1/800 US CAMPI